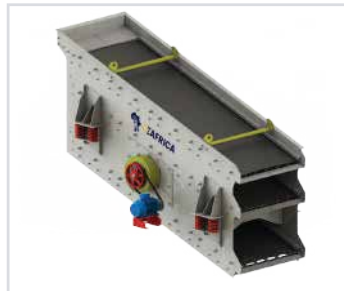
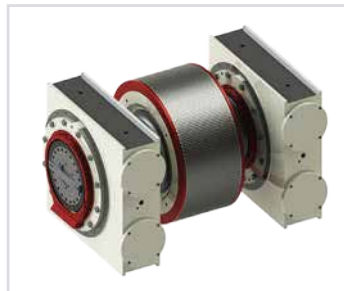
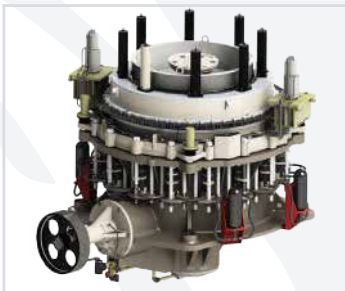




CEAFRICA

EXPERIENCE. PRECISION. EXCELLENCE

CE AFRICA® (Pty) Ltd is a leading provider of crusher equipment and spares.
We also proudly serve as the exclusive distributor of RUBBLE MASTER®
mobile equipment across Sub-Saharan Africa.



Website

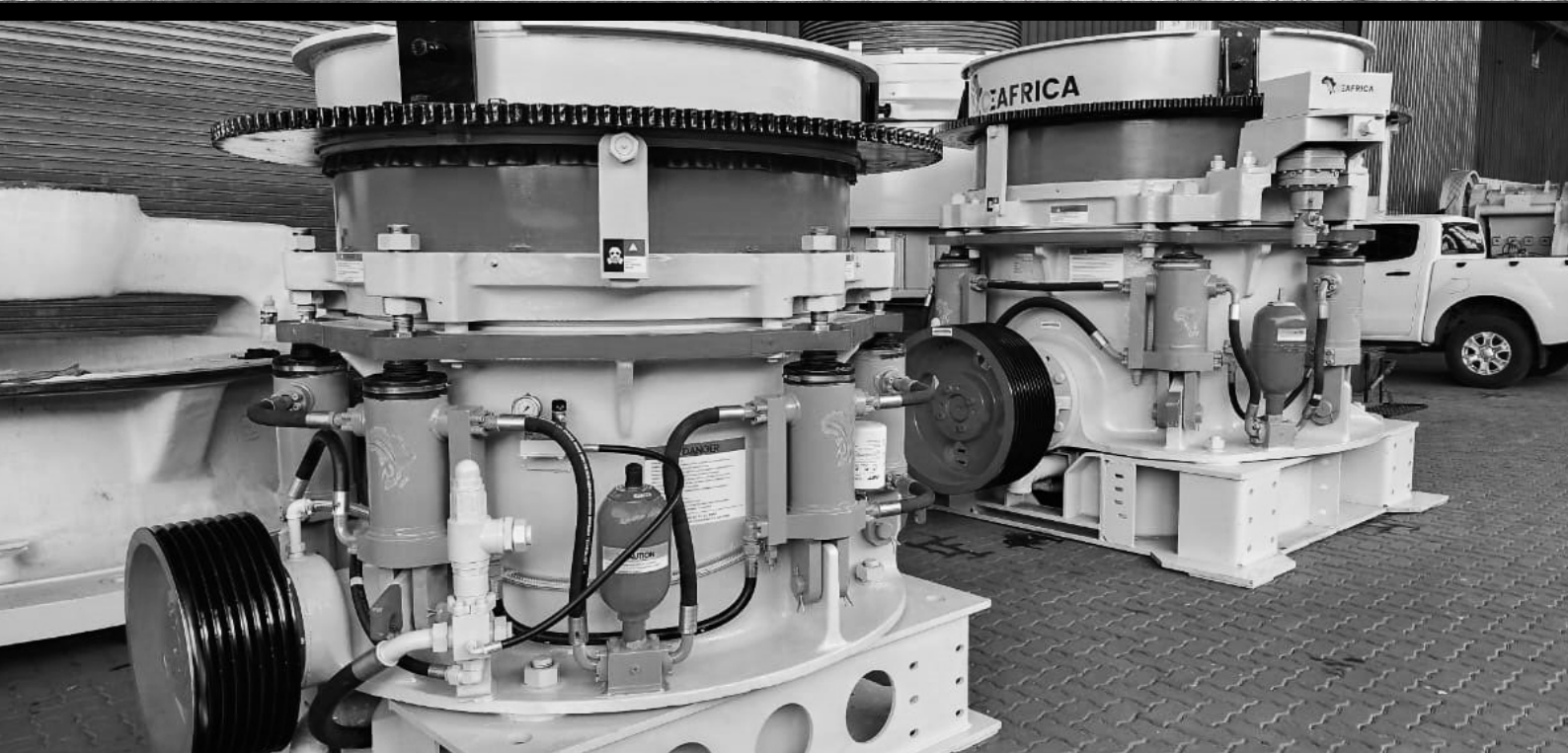
➤ www.ce-africa.com

Contact Details

➤ (+27) 11 568 8324

Email Address

➤ sales@ce-africa.com





CEAFRICA

About Us:

CE Africa (Pty) Ltd, was established with a hand full of technical and highly skilled crusher Personnel. From Design Engineers, Metallurgist, Technicians, and much more. With over 100 years of combined experience in the processing and Mining Industry our main objective is to provide a value-added service with innovation and quality being our main focus.

Our Vision:

CE Africa offers the complete package required in order to reduce down-time, and bring your cost per ton to a minimal. Our Vision is kept simple by adding value to each and every customer we service, we are able to do Repairs, 24/7 Field Service and Spares to all your OEM Equipment.

Service Offerings:

- High Pressure Grinding Roll (HPGR)
- Machine Assembly
- Screen Spares & Repairs
- Feeder Spares & Repairs
- 24/7 Field Service
- Casting & Forging Capacity
- Heavy Fabrication
- Complete Machines
- Large Machining
- Ceramic Wear Liners

Stationary Plants:

- CE Africa | Grizzly Feeders
- CE Africa | Gyratory Crusher
- CE Africa | Impact Crusher
- CE Africa | Single-Cylinder Hydraulic Cone Crusher
- CE Africa | Jaw Crusher
- CE Africa | Multi-Cylinder Hydraulic Cone Crusher
- CE Africa | Vertical Shaft Impact Crusher
- CE Arica Screeners



CE AFRICA (Pty) Ltd is proud to announce its appointment as the exclusive distributor of **RUBBLE MASTER®** across South Africa, Lesotho, Eswatini, Botswana, Zimbabwe, Zambia, the DRC, and Namibia.

Mobile Crushers:

- RM60GO!
- RM70GO!
- RM100GO!
- RM120X
- RMJ110X
- RM MSC8500M
- RM-HS5000M



Logistics Routes Serviced:

- DRC
- Tanzania
- Zambia
- Zimbabwe
- South Africa
- Botswana
- Mozambique
- Namibia



Website

➤ www.ce-africa.com

Contact Details

➤ (+27) 11 568 8324

Email Address

➤ sales@ce-africa.com

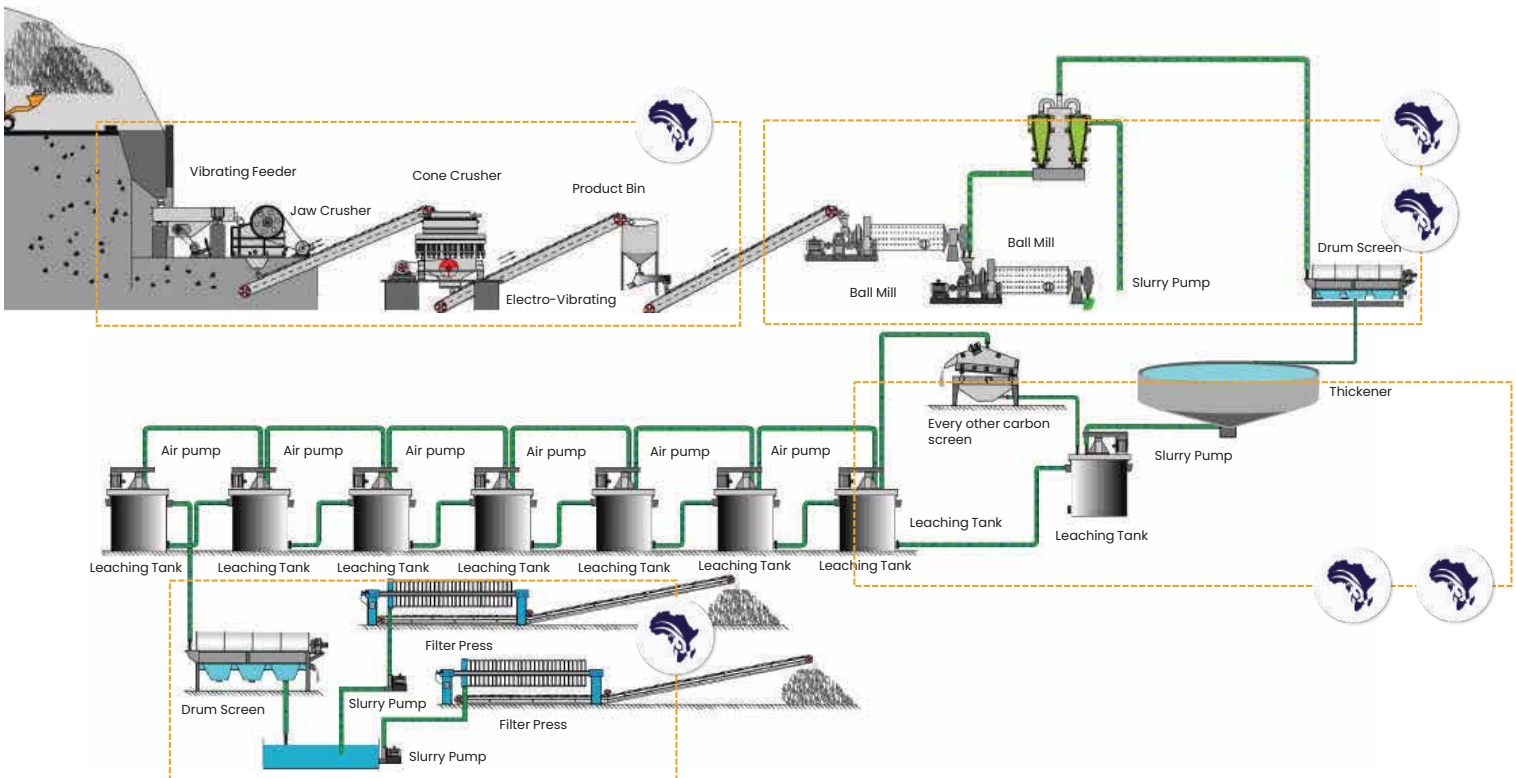
Company Overview

Crusher Equipment Africa



Company Process Flow

Crusher Equipment Africa



Website

www.ce-africa.com

Contact Details

[\(+27\) 11 568 8324](tel:+27115688324)

Email Address

sales@ce-africa.com



HEAVY FABRICATION

We offer a range of fabrication ranging from general, precision and heavy engineering services. Our machine shop is off the grid.



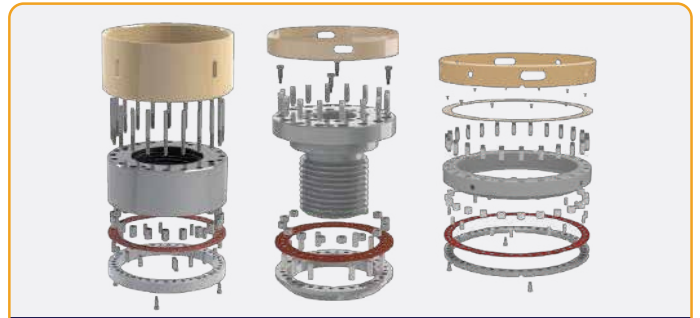
FOUNDRY | CASTING

- Pattern Making
- Moulding
- Casting
- Machining
- Non-destructive testing
- Coating



HYDRAULICS

Our Hydraulic Power Unit (HPU) offers constant monitoring of hydraulic pressures, temperature and filter conditions. Indicator and warning lights advise the operator of reservoir oil level, oil temperature, oil pressure in the tramp and lock post hydraulic circuits and filter status.



DESIGN IMPROVEMENTS

These specially designed head nuts and locking bolts are just one of the examples of our design improvements to our products that ensures uniform pre-load and eliminates the need for a torch ring. We have created a solution that makes liner change out faster, easier and safer. These unique designs offer protection of the threads on the locking head.



24/7 FIELD SERVICE

CE Africa provides round-the-clock field services for all crushing and mining equipment. With a commitment to operational continuity, their 24/7 support ensures timely and efficient maintenance, repair, and assistance to keep mining operations running smoothly.



LARGE MACHINING

CE Africa has an experienced, professional team on hand to provide you with the best solution for your requirements involving large machining.



Website

➤ www.ce-africa.com

Contact Details

➤ (+27) 11 568 8324

Email Address

➤ sales@ce-africa.com



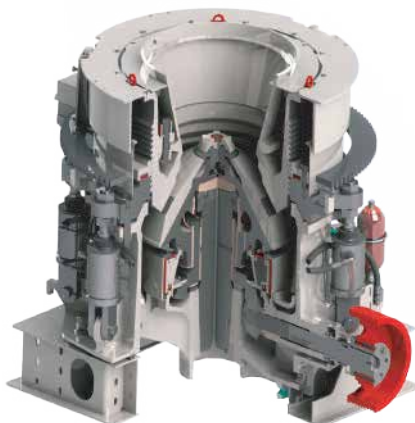
STATIONARY PLANT

- Grizzly Feeders
- Gyratory Crusher
- Impact Crusher
- Single-Cylinder Hydraulic Cone Crusher
- Jaw Crusher
- Multi-Cylinder Hydraulic Cone Crusher
- Vertical Shaft Impact Crusher
- Screens
- HPGR (High Pressure Grinding Rolls)



VALVES

- Actuation
- Air Release Valves
- Ball Check Valves
- Check Valves
- Diaphragm Valves
- Gate Valves
- Pinch Valves
- Pivot Gate Valves
- Bespoke Valves



MOBILE CRUSHERS | RUBBLE MASTER®

CE AFRICA (Pty) Ltd is proud to announce its appointment as the exclusive distributor of RUBBLE MASTER® across South Africa, Lesotho, Eswatini, Botswana, Zimbabwe, Zambia, DRC and Namibia.



LOGISTICS | TRANSPORT

Routes Serviced:

- DRC
- Zambia
- South Africa
- Mozambique
- Tanzania
- Zimbabwe
- Botswana
- Namibia



CERAMIC WEAR LINERS

Our ceramic wear liners are chosen for their outstanding hardness, abrasion resistance, impact resistance, and other properties that make them effective in protecting industrial equipment from wear and extending the operational life of machinery in abrasive environments.



Website

➤ www.ce-africa.com

Contact Details

➤ (+27) 11 568 8324

Email Address

➤ sales@ce-africa.com



HEAVY ENGINEERING | MACHINE SHOP

NO PROJECT TOO BIG OR TOO SMALL

- General & Precision Engineering
- Boilermaking
- Stress Relieving & Non Destructive Testing
- On-site Line Boring
- CNC Milling, Drilling & Turning
- Earthmoving Repairs & Rebuilds
- Underground Mining Equipment Rebuilds & Repairs
- Structural Fabrication
- Service Exchange Units
- Sandblasting & Painting



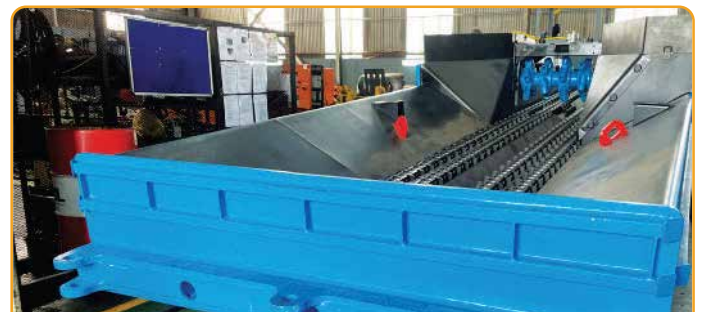
MILLS

- Mill Circuit Health Check
- Comminution Circuit
- Optimization
- Girth Gears
- Pinions
- Lube Systems & Parts
- Complete Drive Train Upgrades
- Main Mill Bearings
- Head Replacements
- Shell Refurbishments
- Liners (Steel, Rubber & Polymet)
- Mill Fasteners
- Complete Mill Change-outs



PUMPS

- Dry-Installed Pump
- Ring-Section Pump
- Vertical Shaft Submersible Pump
- Submersible Borehole Pump
- Submersible Mootor Pump
- Tubular Casing Pump
- Barrel Pull-out Pump
- Submersible Pump in Discharge Tube



UNDERGROUND MINING EQUIPMENT

- Feeder Breakers
- Shuttle Cars
- Roof Bolters
- Mine Hoisting Systems



Website

➤ www.ce-africa.com

Contact Details

➤ (+27) 11 568 8324

Email Address

➤ sales@ce-africa.com

Feeder Breakers



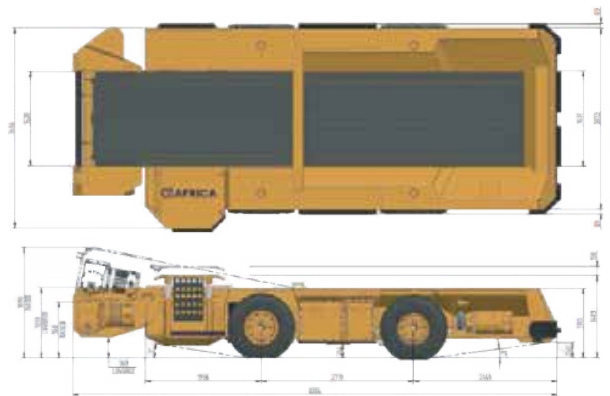
1. Control the size of broken material but also control the handling capacity.
2. Characteristics of light weight, small volume, flexible layout and convenient movement, especially suitable for narrow site work.
3. Directly feeds by the truck or loader, saving the feed hopper and apron feeder needed by other types of crusher, while reducing or completely eliminating the excavation and concrete work, greatly reducing equipment & civil engineering cost.
4. Combined with electro-mechanically driven breaker, touchscreen controls and diagnostics, reduces any delays and down-time.
5. The broken teeth are arranged symmetrically at intervals, & the broken surface is fully covered without blind spots. The broken teeth are made of wear-resistant steel, with long service life.
6. Equipped with automatic centralized lubrication system to ensure normal and trouble-free operation.
7. The feeder breaker can not only adjust the product size & crushing ratio, but also adjust the production handling capacity, and has strong impact resistance to meet different working conditions.



FEEDER BREAKERS

Shuttle Cars

Our shuttle cars are designed to work as a system with continuous miners, efficiently removing cut material from the working face and maximizing the productivity of the entire section. The chassis and rolling gear on each of our shuttle car models were designed, using finite element analysis, to find the optimal balance of Volumetric Load, Vehicle Dimensions, Load-carrying ability and fatigue life. Our shuttle cars are known for their exceptional reliability, lower operating costs, and sustained high levels of productivity.



SHUTTLE CARS

Roof Bolters

1. Increased operator safety, confort and reduced fatigue due to its ergonomic cabin layout with a user friendly control interface.
2. Has been commercially proven to have the lowest running costs.
3. Newly designed and tested advanced filtration system that ensures the optimal performance and reliability of the hydraulic system.
4. Robust modular design.
5. Real-time monitoring and 24h maintenance/after sales support.
6. Industry proven components from reputable manufacturers.
7. Reduced Mean Time to Repair. Easily interchangeable components with easy access from the top and sides of the machine.



ROOF BOLTER

Our Global Footprint

CUSTOMERS WE SERVICE

CEAFRICA



OUR GLOBAL FOOTPRINT



Website

www.ce-africa.com

Contact Details

[\(+27\) 11 568 8324](tel:+27115688324)

Email Address

sales@ce-africa.com



PICTURE GALLERY

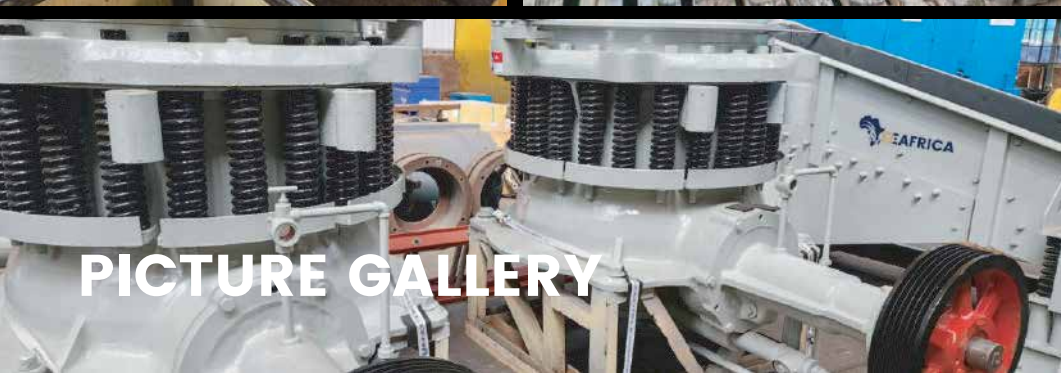


PICTURE GALLERY



PICTURE GALLERY





PICTURE GALLERY

CEAFRICA

CRUSHER EQUIPMENT AFRICA

A PARTNERSHIP WITH US MEANS;

24 Hour Service and Technical Support

Optimization Availability of Critical Spare Parts with Warehouses Strategically located with On-site Store Options.

Internationally Accredited ISO9001 Quality Systems

Safe Durable Products that can be fitted with the latest technology.

Competitive lead times on new machines as well as repairs.

Reliable and Proven Product performance in all mining sectors.



Assembly Shop

➤ 20-22 Graniet Road, Jetpark,
Boksburg,
1459



Machine Shop

➤ Cnr. Atlas & Gerhardus Rd,
Elandsfontein, Germiston,
Johannesburg 1459



Website

➤ www.ce-africa.com

Contact Details

➤ (+27) 11 568 8324

Email Address

➤ sales@ce-africa.com